

OLD TRAIL P.U.D. - PHASE 1

IN PART OF SECTIONS 23 AND 24, TOWNSHIP 40 SOUTH, RANGE 41 EAST
 MARTIN COUNTY, FLORIDA

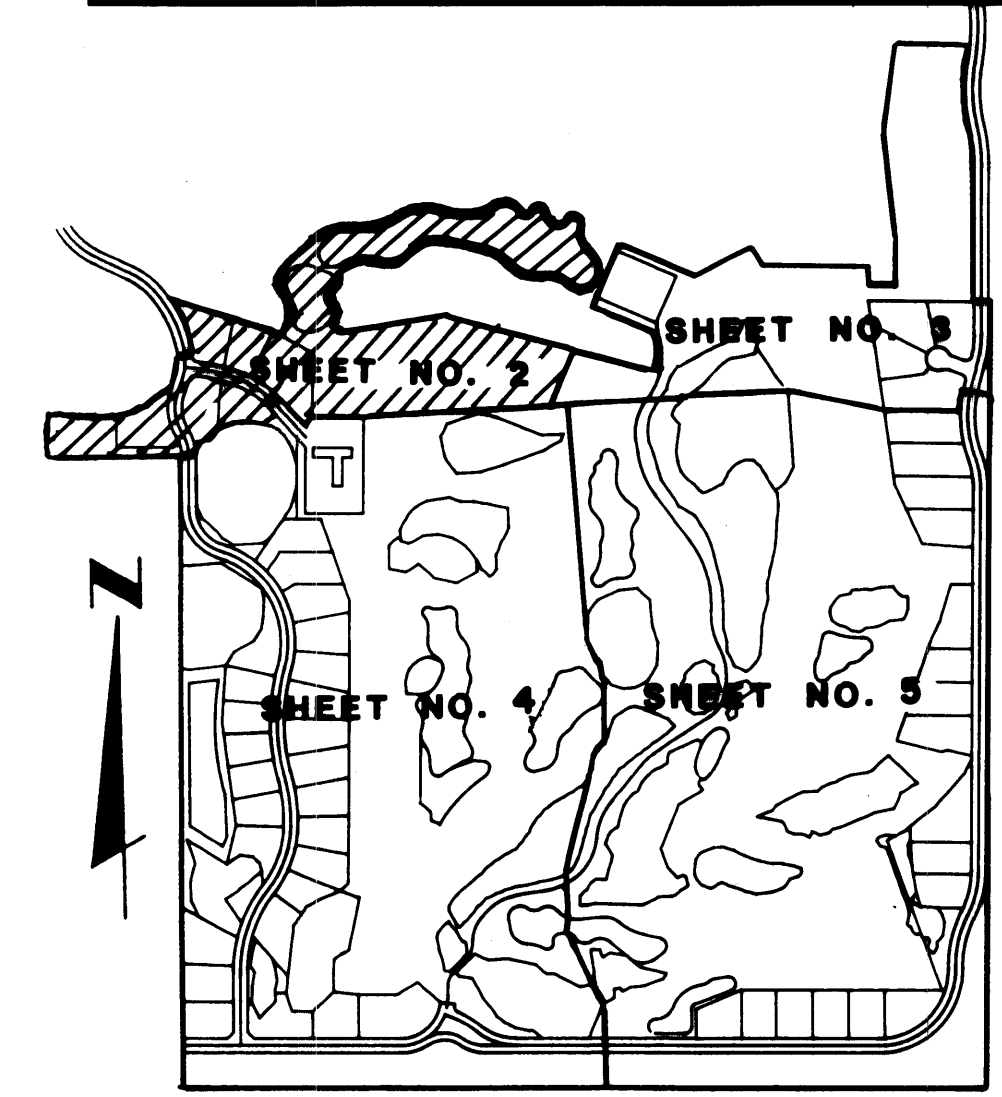
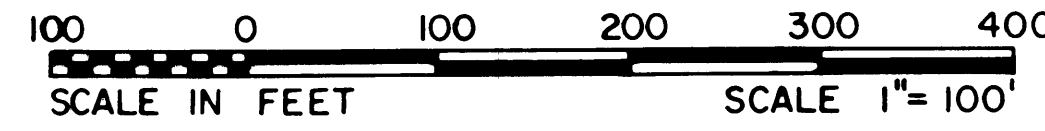
GEE & JENSON
 ENGINEERS - ARCHITECTS - PLANNERS, INC.
 WEST PALM BEACH, FLORIDA
 JUNE 1986

I, Louise V. Isaacs, Clerk of the Circuit Court of Martin County, Florida, hereby certify that this plat was filed for record in Plat Book 10, Page 64, Martin County, Florida Public Records, this _____ day of _____, 1986 A.D.

LOUISE V. ISAACS, CLERK
 CIRCUIT COURT
 MARTIN COUNTY, FLORIDA

FILE NO. _____

BY: _____
 Deputy Clerk

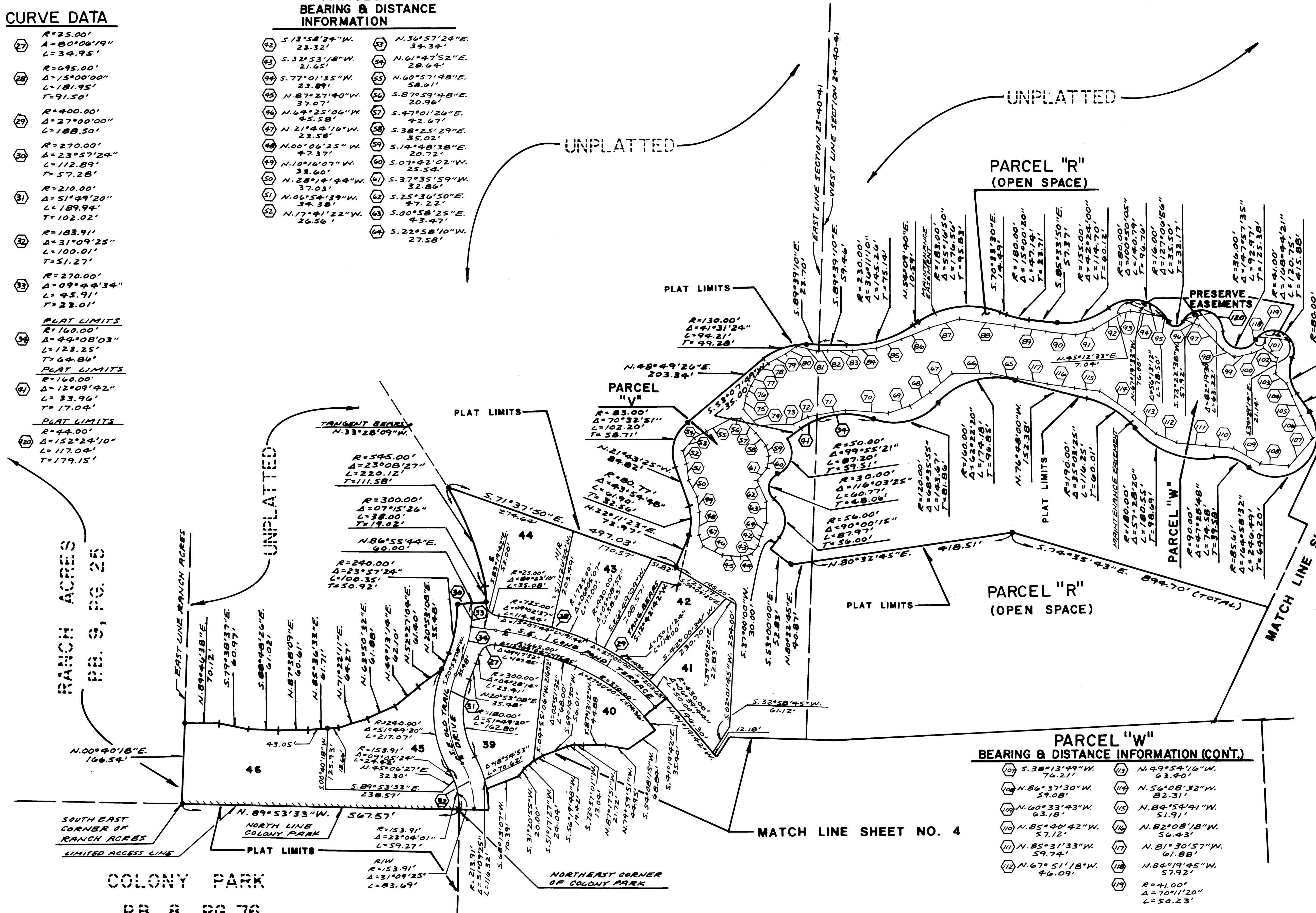


CURVE DATA

- 27 R=25.00'
Δ=80°00'19"
L=34.95'
- 28 R=695.00'
Δ=15°00'00"
L=181.95'
T=91.50'
- 29 R=400.00'
Δ=27°00'00"
L=188.50'
- 30 R=270.00'
Δ=23°57'24"
L=112.89'
T=57.28'
- 31 R=210.00'
Δ=51°49'20"
L=189.94'
T=102.02'
- 32 R=183.91'
Δ=31°09'25"
L=100.01'
T=51.27'
- 33 R=270.00'
Δ=09°44'34"
L=45.91'
T=23.01'
- 34 **PLAT LIMITS**
R=160.00'
Δ=44°08'03"
L=123.25'
T=64.86'
- 35 **PLAT LIMITS**
R=160.00'
Δ=12°09'42"
L=33.96'
T=17.04'
- 36 **PLAT LIMITS**
R=94.00'
Δ=152°24'10"
L=117.04'
T=179.15'

**PARCEL "V"
BEARING & DISTANCE
INFORMATION**

- | | |
|----------------------------|---------------------------|
| 42 S.13°58'24"W 22.32' | 43 N.36°57'24"E 34.34' |
| 44 S.32°53'18"W 21.65' | 44 N.61°47'52"E 28.64' |
| 45 S.77°01'35"W 23.89' | 45 N.60°57'48"E 58.61' |
| 46 N.87°27'40"W 37.07' | 46 S.87°59'48"E 20.96' |
| 47 N.64°25'06"W 45.58' | 47 S.47°01'26"E 42.67' |
| 48 N.21°44'16"W 23.58' | 48 S.38°25'29"E 35.02' |
| 49 N.00°04'25"W 47.37' | 49 S.14°48'38"E 20.72' |
| 50 N.104°16'07"W 33.60' | 50 S.07°42'02"W 25.54' |
| 51 N.28°14'44"W 37.03' | 51 S.37°35'59"W 32.86' |
| 52 N.06°54'39"W 34.38' | 52 S.25°36'50"E 47.22' |
| 53 N.17°41'22"W 26.56' | 53 S.00°58'25"E 43.47' |
| 54 S.22°58'10"W 27.58' | |



PARCEL "R"
(OPEN SPACE)

PARCEL "V"

**PARCEL "W"
BEARING & DISTANCE
INFORMATION**

- | | |
|----------------------------|----------------------------|
| 65 N.79°41'58"W 55.42' | 66 N.67°44'28"E 62.50' |
| 67 S.88°44'42"W 79.44' | 68 N.71°58'28"E 64.50' |
| 69 S.48°32'42"W 58.63' | 70 S.83°21'51"E 114.55' |
| 71 S.55°19'43"W 51.34' | 72 S.81°39'09"E 63.98' |
| 73 S.69°40'32"W 45.90' | 74 S.84°15'35"E 61.99' |
| 75 N.86°50'07"W 88.25' | 76 N.72°57'52"E 37.36' |
| 77 S.78°33'56"W 78.58' | 78 N.56°49'01"E 62.25' |
| 79 S.61°00'20"W 32.42' | 80 N.73°02'51"E 23.80' |
| 81 S.86°40'02"W 74.40' | 82 S.78°57'17"E 72.21' |
| 83 N.40°46'04"W 44.76' | 84 S.67°19'33"E 1.81' |
| 85 N.11°28'02"E 28.84' | 86 S.78°57'17"E 35.15' |
| 87 N.22°40'27"E 24.03' | 88 S.45°02'13"E 70.93' |
| 89 N.28°00'24"E 28.42' | 90 S.58°24'34"E 27.05' |
| 91 N.46°55'13"E 29.58' | 92 N.75°42'10"E 35.14' |
| 93 N.60°29'59"E 41.18' | 94 N.64°58'18"E 27.08' |
| 95 N.51°39'58"E 26.61' | 96 S.53°28'50"E 35.97' |
| 97 S.75°09'49"E 43.33' | 98 S.06°50'20"W 31.80' |
| 99 N.84°09'03"E 23.46' | 100 S.49°48'13"E 31.88' |
| 101 N.88°32'37"E 49.03' | 102 S.22°42'45"E 27.69' |
| 103 N.83°28'44"E 44.42' | 104 S.25°29'16"E 45.29' |
| 105 N.67°44'33"E 54.47' | 106 S.29°31'49"E 48.94' |

**PARCEL "W"
BEARING & DISTANCE
INFORMATION (CONT.)**

- | | |
|----------------------------|---|
| 107 S.38°13'49"W 76.21' | 108 N.49°54'16"W 63.40' |
| 109 N.86°37'30"W 59.08' | 110 N.56°08'32"W 82.31' |
| 111 N.60°33'43"W 63.18' | 112 N.84°54'41"W 51.91' |
| 113 N.85°40'42"W 57.12' | 114 N.82°08'18"W 56.43' |
| 115 N.85°31'33"W 59.74' | 116 N.81°30'57"W 61.88' |
| 117 N.67°51'18"W 46.09' | 118 N.84°19'45"W 57.92' |
| | 119 R=41.00' Δ=70°11'20" L=50.23' |

COMPUTED PAC
 DRAWN D.C.B.
 CHECKED W
 COMMENTS
 APPROVED
 REVISION

COLONY PARK
 RB. 8, PG. 76